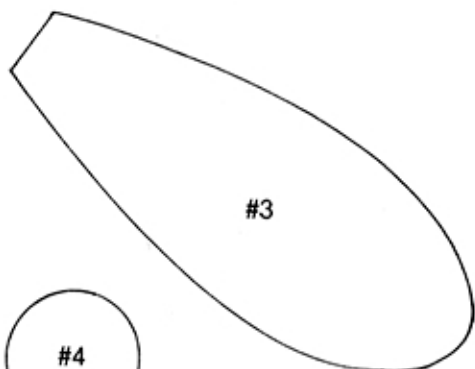
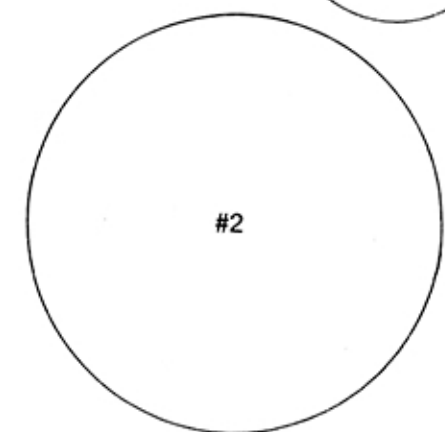
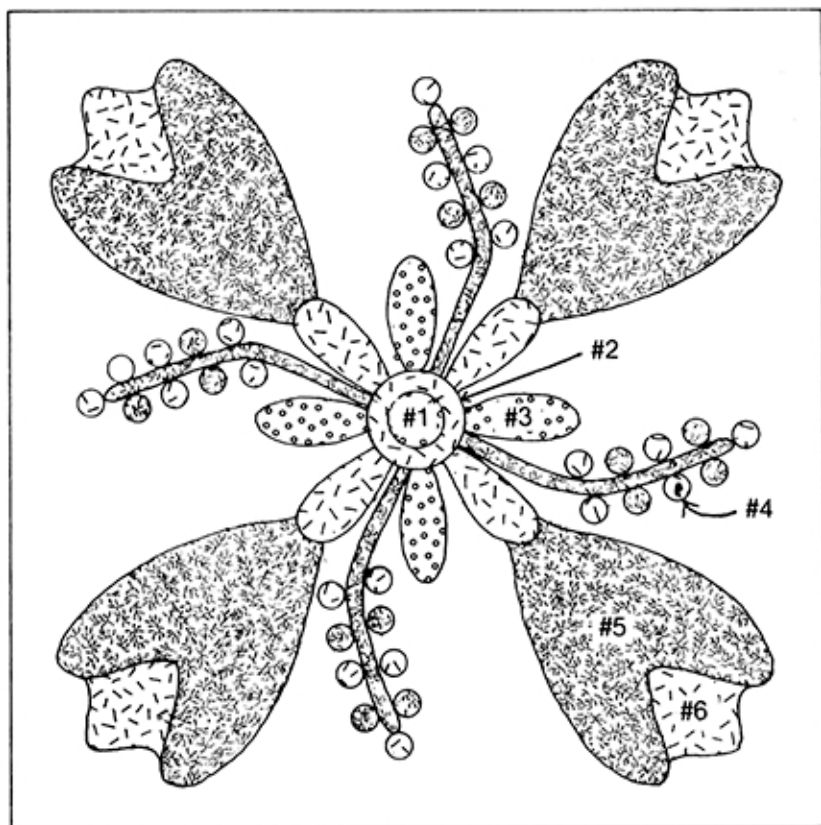
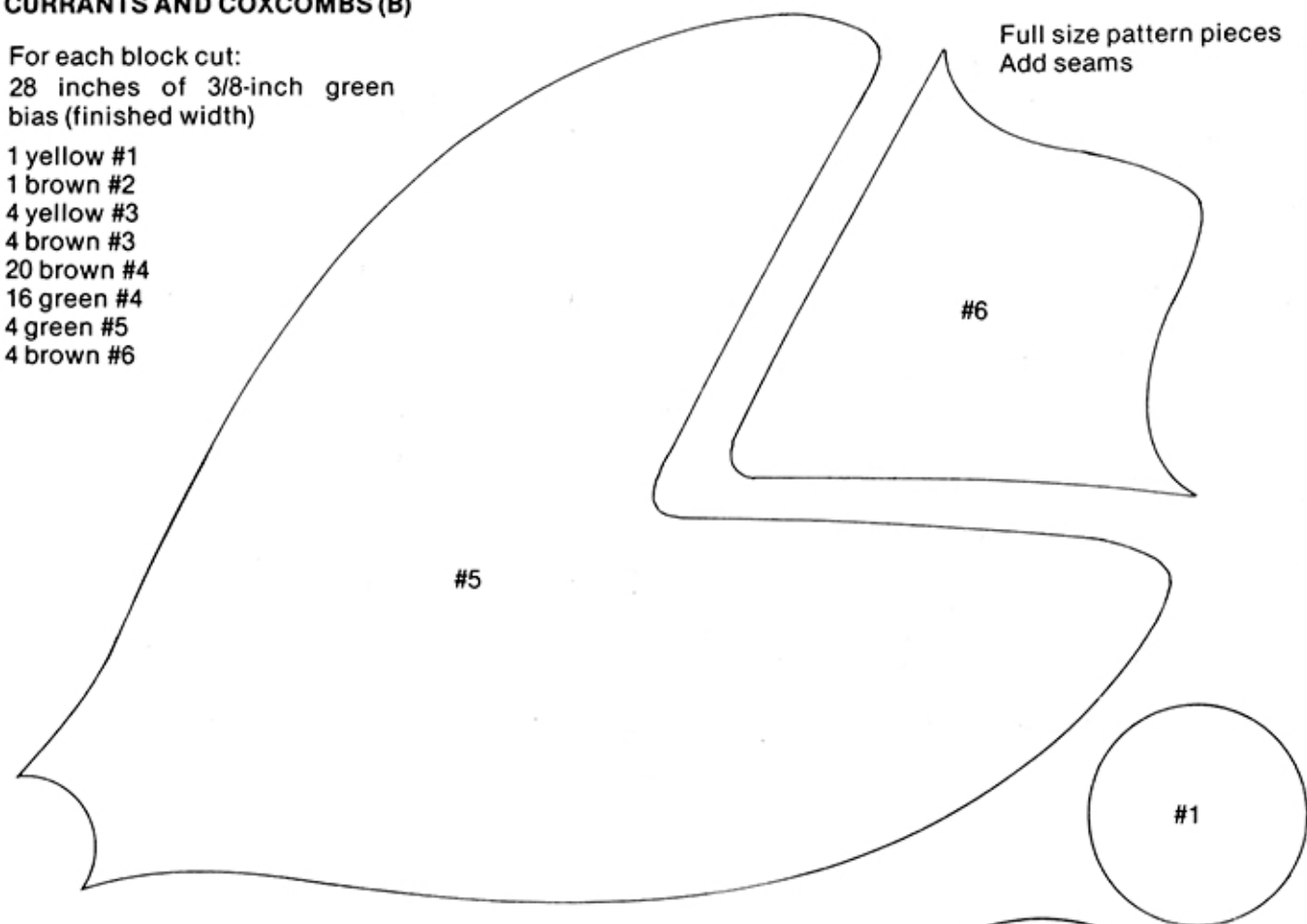


CURRENTS AND COXCOMBS (B)

For each block cut:
28 inches of 3/8-inch green
bias (finished width)

1 yellow #1
1 brown #2
4 yellow #3
4 brown #3
20 brown #4
16 green #4
4 green #5
4 brown #6

Full size pattern pieces
Add seams



Scaled placement diagram