

Summer and Winter Quilt by Alice Brooks No. 5867

T. M. REG. U. S. PAT. OFF.

The **BLOCK CHART** shows an actual size block with the pattern pieces lettered and each material numbered. This aids in joining the patches to form the block. The pattern pieces have been tested and form a perfect block as illustrated in the **BLOCK CHART**.

The **ILLUSTRATION** shows a full-sized quilt in both sizes to show the effect of the finished quilt. Use it when joining the blocks, to determine how many rows you need. The sizes given are of the finished single and double bed quilt. Sizes may vary for some people take a larger seam allowance than others.

MATERIAL REQUIREMENTS give the exact quantity of materials necessary for either a single or double bed size quilt and for 32 and 36 inch material. They show what parts of the quilt are made of each material, and how many patches of each material are to be cut for the quilt. The lining and border are included with the patches in these requirements. Cut lining and border first and use what is left for the patches.

SUMMER AND WINTER

Type of Quilt

Summer and Winter is made entirely of patchwork blocks in two materials. If preferred, it could be made of alternate patchwork and plain blocks. Material requirements are given for the first arrangement. The lining is made in material 1; the border in material 2, as numbered on the **BLOCK CHART**.

Quilt Sizes

Single bed 63 x 95 inches; 77 blocks. Double bed 71 x 95 inches; 88 blocks.

Color Schemes

Material 1, white; material 2, any color print. Material 1, yellow; material 2, navy print or brown print. Material 1, light rose or peach; material 2, blue print. Material 1, yellow or light rose print; material 2, violet print.

Pattern Pieces

Trace pattern pieces A and B on thin cardboard. Cut them out on the outer line; the inner line indicates the sewing line; the small lines are slashes. Lay the cut pieces on the material; mark around them with pencil. Cut on the marked line. Mark and cut the pattern pieces carefully. The beauty of a quilt depends on accuracy in cutting and sewing.

Cutting the Block

For one block cut four A patches and four B patches in material 1. Cut four reverse A patches and four reverse B patches in material 2.

Forming the Block

To make the block follow the **BLOCK CHART** and join an A patch in material 1 to a B patch in material 2. Join an A patch in material 2 to a B patch in material 1. Join the two groups and make three more such groups. Join these groups together following the **BLOCK CHART**. This completes the block.

Interlining

Use sheet cotton sold in folded sheets or padding large enough to cover entire quilt. Using sheet cotton in folded sheets, cut a square the size of the **BLOCK CHART** without the seam allowance. Baste to the back of the block. Using padding in one piece, join blocks first as told below. Tack padding over the entire joined blocks. Interline border separately.

Joining Blocks

Join blocks in rows the length of quilt; follow **ILLUSTRATION** for the number of blocks needed. Join rows to form the size quilt desired, following **ILLUSTRATION** for number of rows needed.

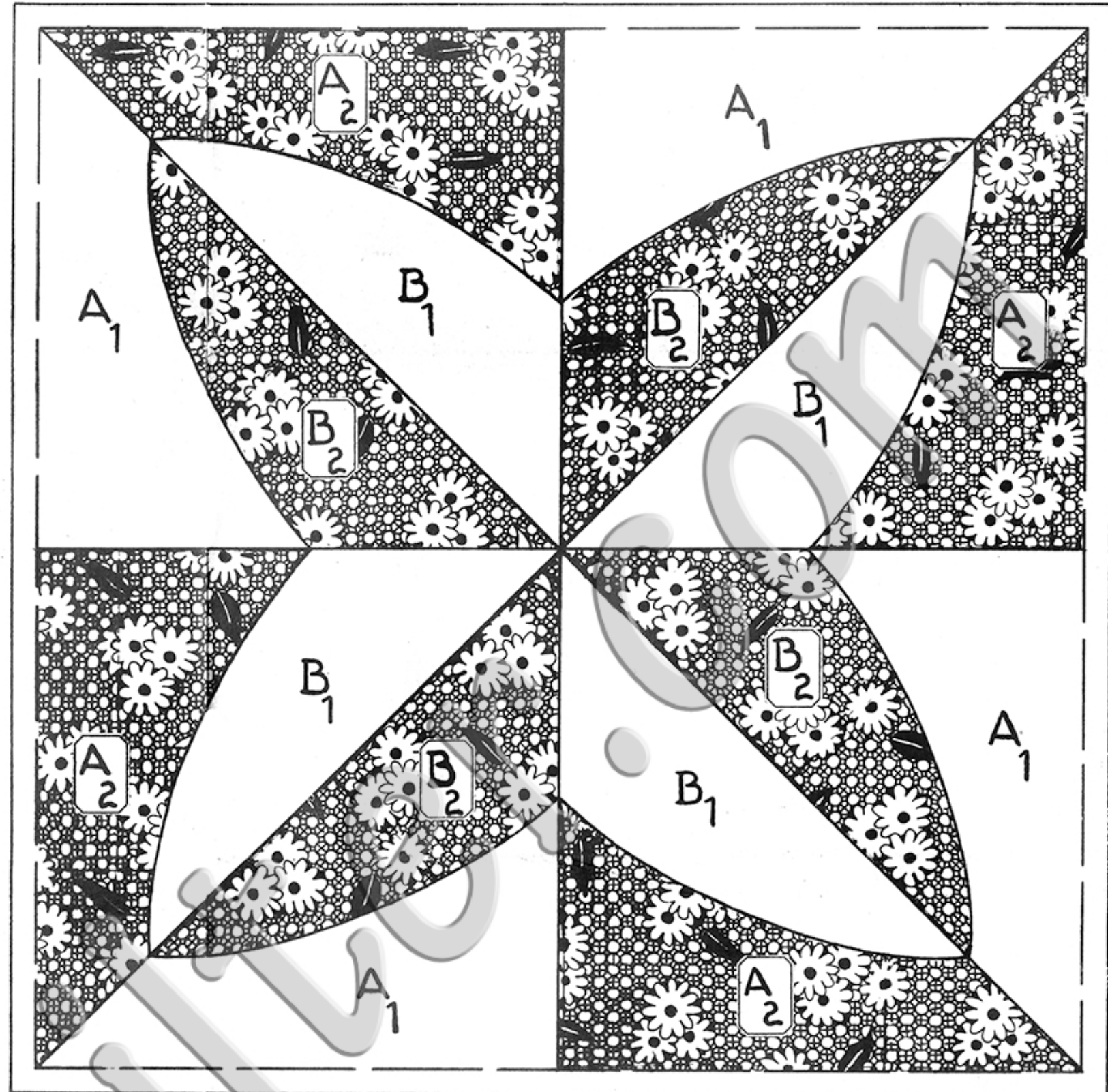
Border

Width of finished border is $3\frac{1}{2}$ inches. Cut two $7\frac{1}{2}$ inch strips, 1 inch longer than length finished quilt is to be. Cut two $7\frac{1}{2}$ inch strips, 1 inch longer than width finished quilt is to be. See dimensions for both size quilts on **ILLUSTRATION**. Fold strips in half lengthwise. Join a shorter and a longer one, mitring the corners. Keep seams to inside. Interline this band to same thickness as quilt. Join and interline other two strips. Match corners of border to corners of joined blocks, and sew on so that all raw edges are to back of quilt.

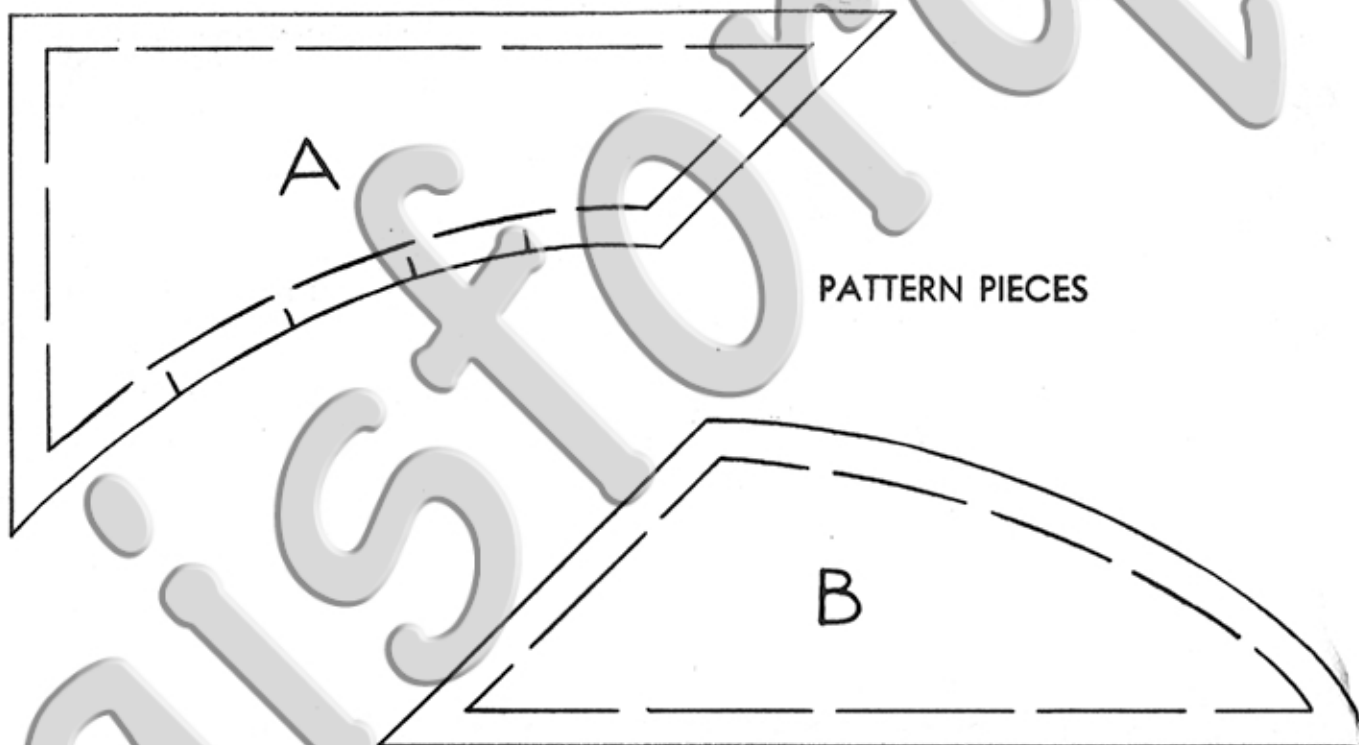
Lining

SINGLE BED SIZE. Cut and join two 90 inch lengths of lining in a lengthwise seam. Cut the lining 58 inches wide leaving the seam in the center. Sew the lining to the quilt, joining the edge to the border seam. Tack the lining to the quilt, tacking at the corners of the blocks and at the edges of patches at intervals throughout the quilt, tacking through entire quilt.

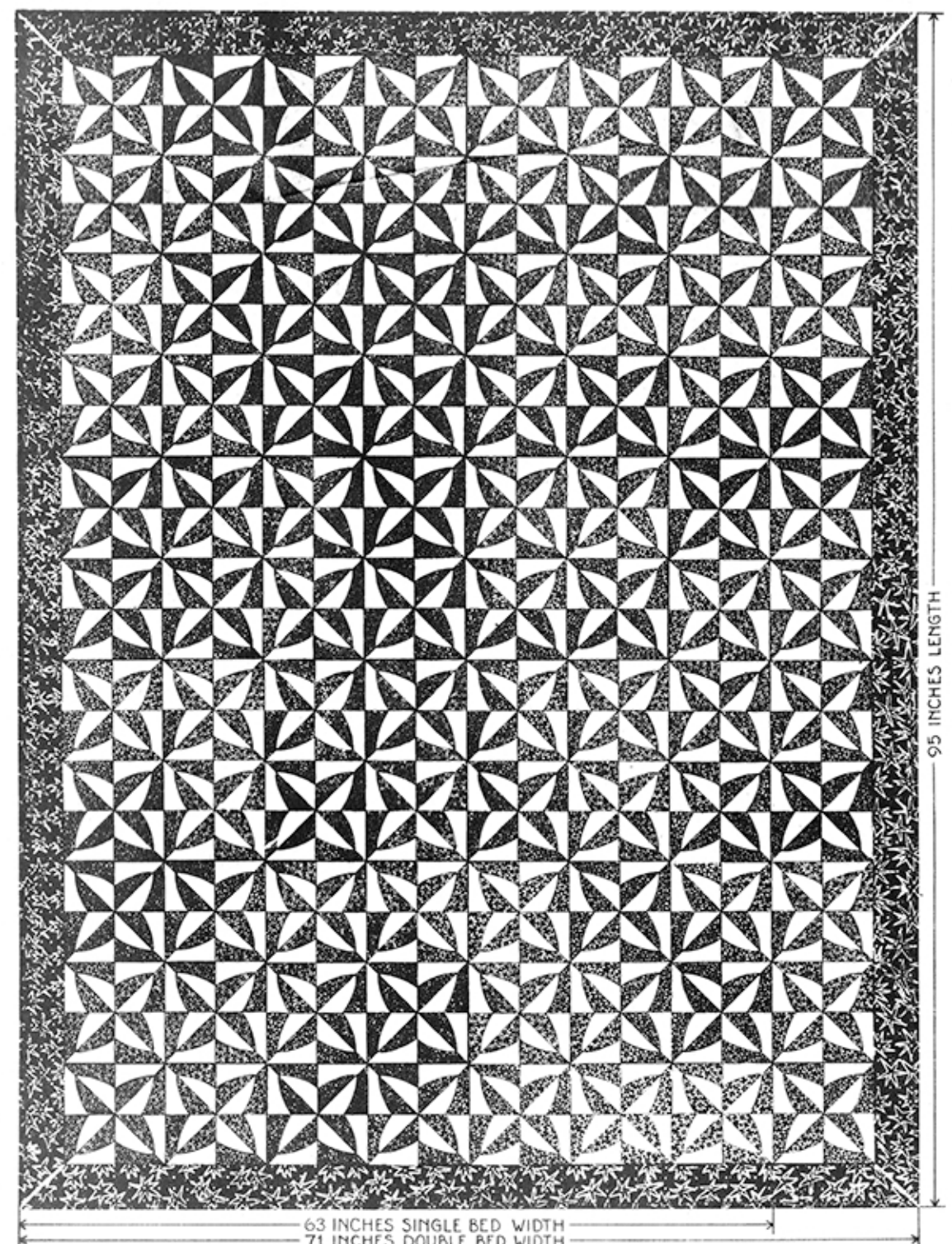
DOUBLE BED SIZE. If material is less than 36 inches wide, cut and join three 90 inch lengths of lining in lengthwise seams. If it is 36 inches wide follow single bed directions. Cut lining 66 inches wide, cutting same amount off each side length. Line quilt as described above.



BLOCK CHART



PATTERN PIECES



ILLUSTRATION

Material Requirements

Single Bed Size			Double Bed Size		
63 x 95 Inches	32	36	71 x 95 Inches	32	36
77 Blocks	Inches	Inches	88 Blocks	Inches	Inches
Material 1			Material 1		
Lining			Lining		
308 A patches	9-1/8	8	352 A patches	10-1/2	9-1/4
308 B patches	Yards	Yards	352 B patches	Yards	Yards
Material 2			Material 2		
Border			Border		
308 reverse A	6-3/4	5-7/8	352 reverse A	7-3/8	6-1/2
308 reverse B	Yards	Yards	352 reverse B	Yards	Yards
Sheet Cotton		11	Sheet Cotton		15
Interlining		Yards	Interlining		Yards